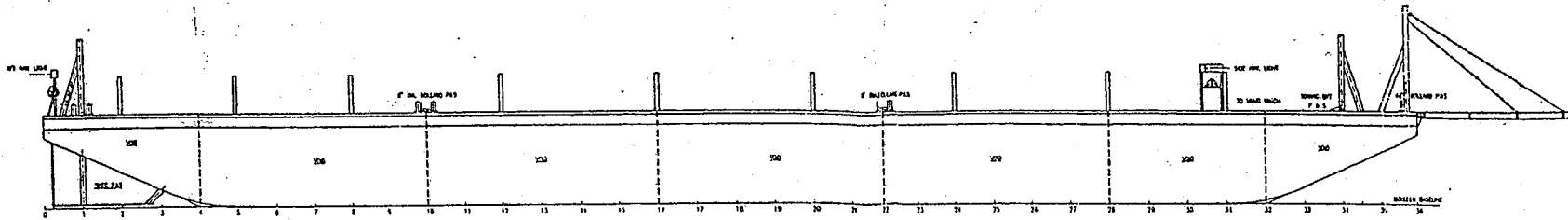
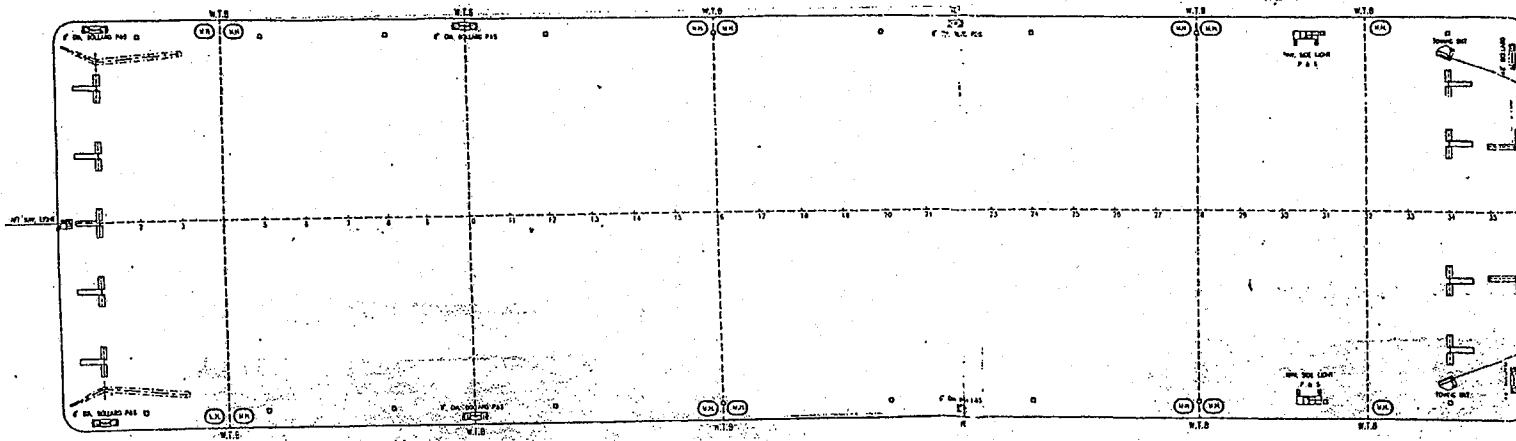


BARGE SAGAR II



PROFILE



MAIN DECK

SHIP'S COPY

PRINCIPAL DIMENSIONS

LENGTH O.A. (HULL)	180'-0"
BREADTH MLD.	50'-0"
DEPTH MLD.	12'-0"

NOTE: 1-DECK LOADING 1500 PSF UDL
2-ALL SPACES ARE VOID.

MARINE DESIGNS PTE. LTD.	
SINGAPORE	
PROJECT P.L. CONTECH-5, AN CE 011 & 15 012	
180'X50'X12' DECK CARGO BARGE	
DRAWING GENERAL ARRANGEMENT	
DATE	SCALE
28.03.83	1/2" = 1'
DRAWN	PROJECT NO.
E.Y.L.	P/100
CHECKED	DATE
G.E.K.	28.03.83

THIS DOCUMENT AND THE INFORMATION IT CONTAINS IS CONFIDENTIAL AND SHALL BE PROPERTY OF MARINE DESIGNS PTE. LTD. IT IS NOT TO BE COPIED OR REPRODUCED OR IN ANY MANNER DISCLOSED TO ANY THIRD PARTY FOR ANY PURPOSE WITHOUT THE WRITTEN PERMISSION OF MARINE DESIGNS PTE. LTD.